



# Student Village

Be a part of a vibrant student community.  
Make new friends - all within a safe and  
supportive environment.



# Welcome

---

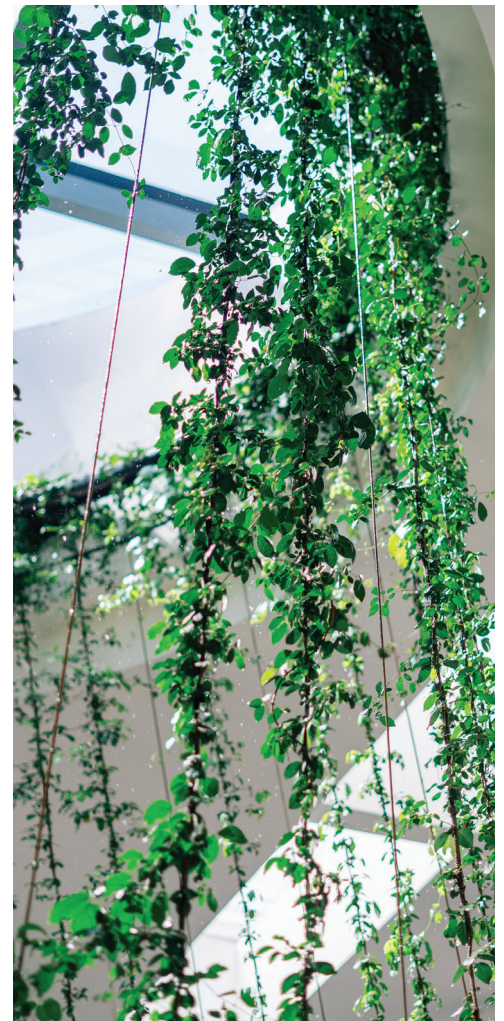


Kuching is a great city for student life. Vibrant. Multicultural. Welcoming. It is one of the most affordable Malaysian cities for students to live in and we want you to find your perfect home here.

In Kuching, you'll be surrounded by a great food scene, and a community steeped in culture and traditions. A multicultural city, the locals are welcoming, and friendly, offering our students a real sense of community.

The many international festivals held annually, and its proximity to nature offers more than just high-quality Australian education. Its connectivity to the rest of the world also ensures you're never far from a quick weekend escape from student life.

Home to over 700,000 people, Kuching is a modern, safe and affordable city that offers an unbeatable lifestyle for students.



# Why live with us

You're in for a fantastic experience...

## Stress-free accommodation.

We simplify the process of finding a place to live in Kuching, making your search stress-free.

## The right price.

Our accommodation comes in the size and with the facilities that suit any budget and personal needs.

## The right location.

Being on-campus means you're never far from university facilities.

## Hassle-free living.

You will have free Wi-Fi and the 24-hours assistance from our Resident Advisors and hostel wardens. Student Village is also located within campus grounds, with major shopping malls, a hospital, banks and government offices all within walking distance.

## Feel safe with us.

Our campus security team is on call 24/7 while security personnel are on duty at all times throughout the campus.

## We're here for you.

The range of support we offer residents ranges from helping you settle in with us, to health and wellbeing support.



# Student Village

The place you'll call home while you're with us...

Staying on campus is more than just having a room with us. It is an experience. It is family and friends that you'll have for life.

At Student Village, we provide wellbeing support, as well as organise social activities throughout the year.

All our rooms are fully furnished to ensure a comfortable stay. Depending on your chosen unit, you will have either air conditioning or fan while Wi-Fi is available 24/7. At Student Village, your room is your own private space to add personal touches to make you feel at home.

One of the most exciting things about being a part of Student Village will be meeting the other residents. We organise activities regularly so you get to know other residents better. Throughout the year, there are lots of fun social activities planned including sporting events, outings, barbecue nights and much more!



## Safe and Secure

Relocating to another city is a big thing, which is why we have a dedicated team you can talk to when you need support. They will also check up on you throughout your time with us and make sure your health and wellbeing are on track for you to achieve academic success.

You will be guided by a trained Resident Advisor (RA) who will support you in settling in to university and campus life. Your RA will be your source of support and is available to you when you need them.

During your initial week on campus, you will be introduced to not only your fellow residents but we'll help you familiarise yourself with all the on-campus facilities, wellbeing support resources as well as local amenities such as public transport, shops and medical services.

Your security and safety are our priority so each bedroom have individual lock that only you and the Warden can access. There are CCTVs installed throughout and security personal are on 24/7 desk duty at the main entrance of the Village.

# Your new home

Finding the right accommodation to suit your individual needs is an important step in preparing for your student life at Swinburne Sarawak.

Student Village offers an array of living arrangements designed to provide a supportive and enriching experience for all residents. We are committed to creating a conducive learning environment that caters to the different needs of our residents and ensuring a comfortable and safe stay.

The Student Village is divided into separate residential blocks for males and females. This ensures privacy while maintaining an atmosphere conducive to focused study and personal growth. Recognizing this importance, the Student Village implements a strict noise curfew from 11pm onwards. This policy allows the residents to focus on their studies and to get a good night's rest without disruptions.

The amenities and facilities at Student Village are tailored to support your academic and social needs. You can enjoy access to quiet study areas, communal spaces for group activities and socializing, and recreational facilities that promotes a balanced lifestyle. The hostel also offers 24-hour Wi-Fi connectivity, ensuring that residents can access



online materials, collaborate on projects and stay connected with family and friends anytime they need.

With tenureship of rooms beginning on either the 1<sup>st</sup> or 16<sup>th</sup> of each month, you will find that this flexibility suits your academic schedule perfectly. As it concludes every 15<sup>th</sup> or the last day of the month, you'll find that transitioning between academic calendar is hassle-free.

### Inclusivity and Accessibility

Inclusivity and accessibility are important to us. Students applying for accommodation are required to indicate if they have any physical disability that requires our attention. We will strive to make the necessary arrangements to ensure a comfortable and accessible living arrangements while you're with us.

# The right room for you

Booking of rooms at the Student Village is subject to room availability and payment of room deposit.

Room types	Furnishing									
	Shoe rack	Wastepaper basket	Mattress protector	Storage spaces	Wardrobe	Study table	Study chair	Single bed	Fan	Air conditioning
Standard Twin	✓	✓	✓	✓	✓	✓	✓	✓	✓	✓
Standard Single	✓	✓	✓	✓	✓	✓	✓	✓	✓	✓
Standard Plus Twin	✓	✓	✓	✓	✓	✓	✓	✓	✓	✓
Standard Plus Single	✓	✓	✓	✓	✓	✓	✓	✓	✓	✓



## Standard Twin

Standard furnishing: individual shoe rack, wastepaper basket, a mattress protector, storage spaces, a wardrobe, study table and chair, single bed, and a ceiling fan.

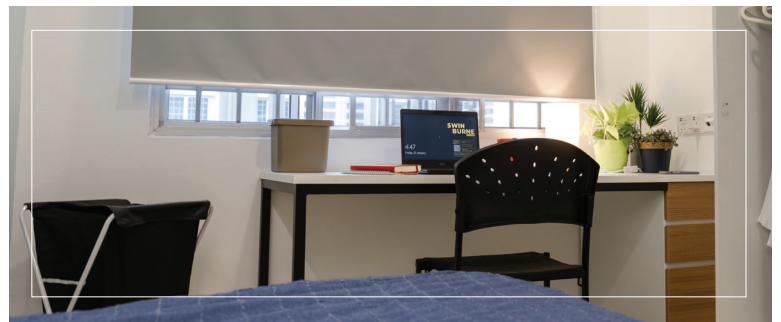
Monthly rental	RM540.00
Deposit	RM540.00



## Standard Single

Standard furnishing: individual shoe rack, wastepaper basket, a mattress protector, storage spaces, a wardrobe, study table and chair, single bed, and a ceiling fan.

Monthly rental	RM950.00
Deposit	RM950.00





## Standard Plus Twin

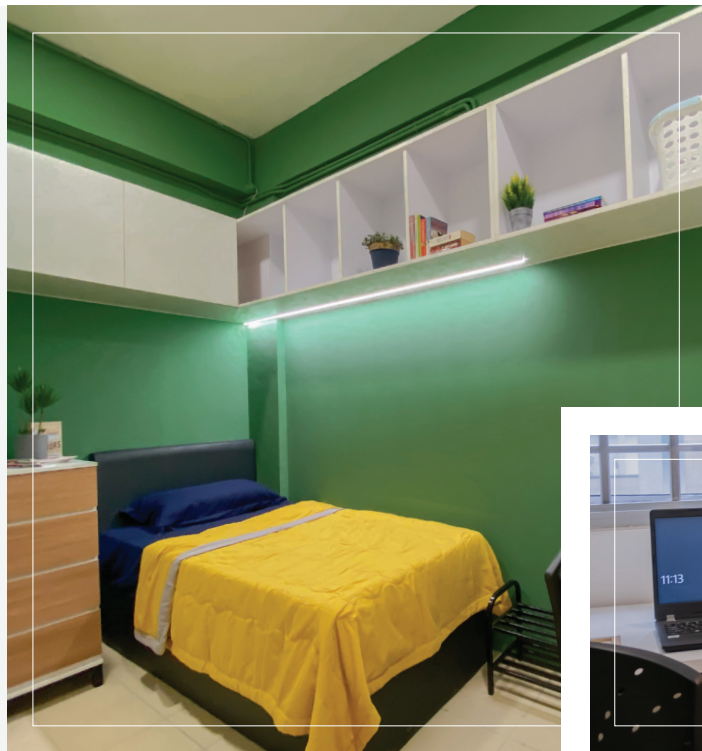
Standard furnishing: individual shoe rack, wastepaper basket, a mattress protector, pillow, storage spaces, a wardrobe, clothes hangers, study table and chair, table lamp, single bed, and a ceiling fan.

**Monthly rental** RM950.00

**Deposit** RM950.00

**Utilities deposit** RM500.00

The Standard Plus Twin room is also air conditioned. These are charge separately and 'as per usage'.



## Standard Plus Single

Standard furnishing: individual shoe rack, wastepaper basket, a mattress protector, pillow, storage spaces, a wardrobe, clothes hangers, study table and chair, table lamp, single bed, and a ceiling fan.

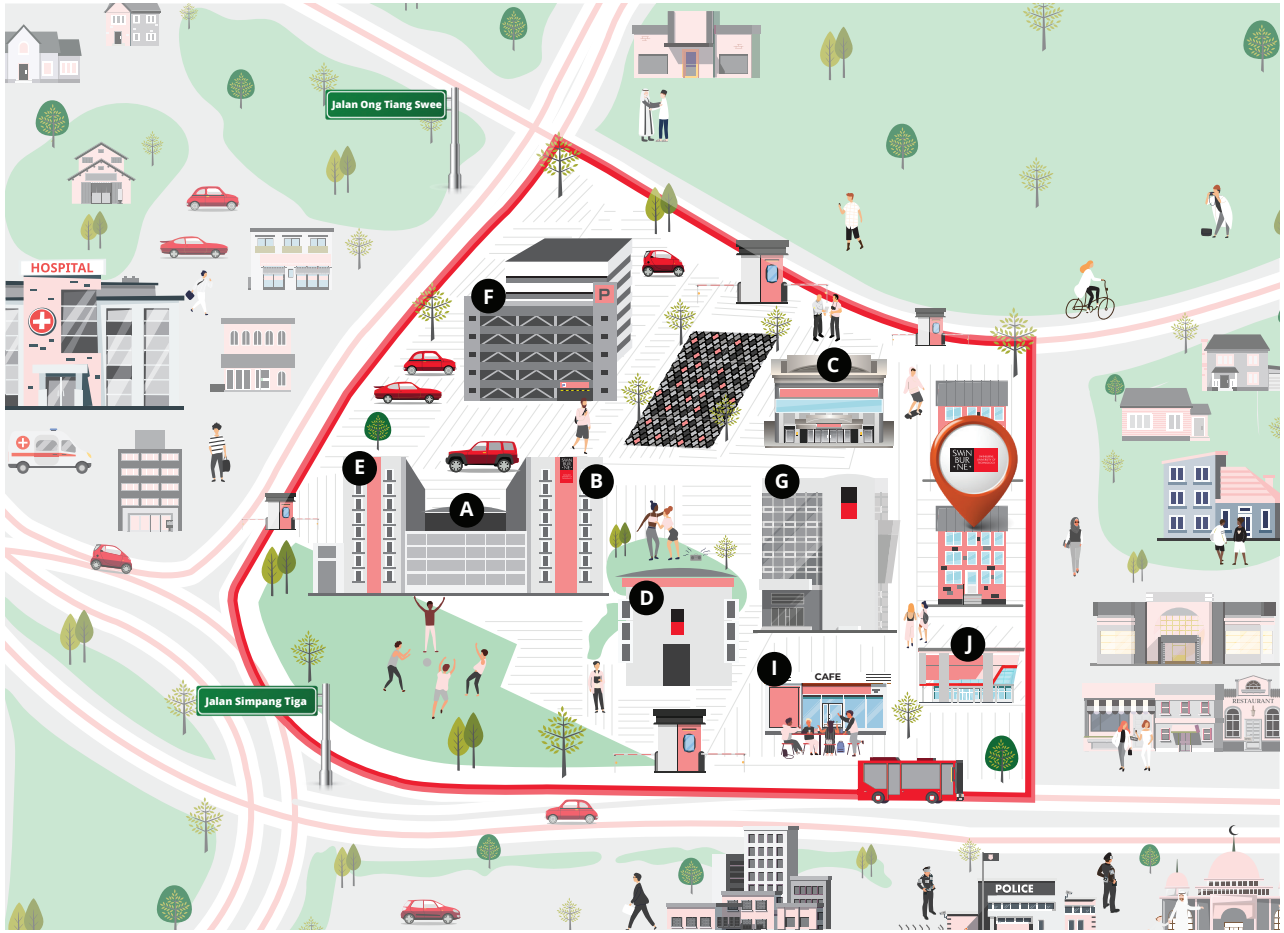
**Monthly rental** RM1250.00

**Deposit** RM1250.00

**Utilities deposit** RM500.00

The Standard Plus Single room is also air conditioned. These are charge separately and 'as per usage'.





**A** Chancellery Building & Borneo Atrium

**B** Faculty of Business, Design & Arts

**C** Multipurpose Hall

**D** Lecture Theatre

**E** Faculty of Engineering, Computing & Science

**F** Multistorey Carpark

**G** Block G & Centre for Digital Futures



**Student Village**

**I** Cafeteria

**J** Student Hub



# Facilities, Health And Safety Services

We prioritise the welfare and wellbeing of our residents through various facilities and support services. This enable our students to thrive in an environment that supports their wellbeing, social connection and academic success.

Some of the common amenities and services that we provide our residents:

## Access card

You'll be provided with an access card for the main entrance into Student Village, the entrance to your resident hall and into your room. All rooms are also equipped with digital locks, allowing access to the rooms via pass codes.

## Internet services

Ethernet ports are available in the rooms while Wi-Fi access are provided free of charge, at all common areas of the Village.

## Common pantry and lounge

All floors in the hostel block are equipped with a common pantry and lounge area.

## A Central Kitchen and Dining Hall

Located at Student Village 1, the Central Kitchen is equipped with cooking utensils and equipment for residents to prepare meals. Adjacent to the kitchen is a dining hall that is fully furnished for you to enjoy your meals.

## Communal Laundry

The 24-hour self-service laundry room is located at the common area between Student Village 2 and Student Village 3.

## Parcels and mails

These will be delivered to the Accommodation Office located at Student Village 1.

## Central foyer and outdoor area

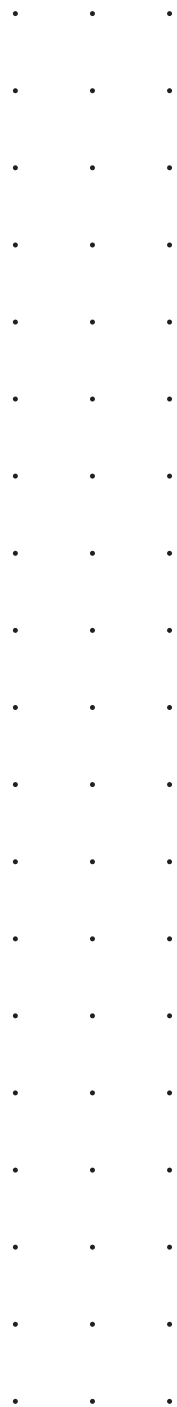
Designed for relaxation and enjoyment, the central foyer and outdoor area provides a tranquill retreat. These spaces are comfortable enough where students can enjoy their morning coffee or study session with a view of calming vegetation. The outdoor is equipped with a BBQ pit and gazebo, and is located next to the Communal Kitchen at Student Village 1.

## Janitorial Service

Janitorial service is available for regular cleaning of common areas and hostel hallways.

## Safety and Health

The Student Village is gated and access into the area is by access card only. Around-the-clock security patrols are carried out by our security personnel while the public areas in and around Student Village are equipped with CCTVs. Swinburne Sarawak is located adjacent to the Borneo Medical Centre, while Timberland Medical Centre is not more than 10-minute drive from the campus.



- 
- 
- 
- 
- 
- 
- 
- 

# Supporting our students

## Wardens

Dedicated Male and Female Wardens oversee the welfare of the residents. Wardens manage all operations of the Student Village and work with the Resident Advisors and the residents to ensure the living spaces are safe and supportive of the residents' wellbeing.

With the support of the Resident Advisors, Wardens work closely with the University community to provide a high and consistent standard of care, and to build communities that live the University's core values.

The Wardens' room is located within the Village grounds. They are available after work hours, and on weekends for any cases that concerns residents' health, safety and wellbeing.

---

## Resident Advisors

Resident Advisors (RA) are high-achieving senior students trained to support residents' transition into tertiary study. They assist with developing and maintaining the Village's sense of community.

The RAs live on-site and are often the first point of contact for residents needing assistance or support. RA have many roles within the community, including after-hours support, community events organiser and, student welfare and support.

---

## Emergency Response Team

The Student Villages' Emergency Response Team (SVERT) supports the University's ERT as first responders in the event of an emergency or incidents that happen at the Student Village. The SVERT also plays the role of ensuring the safety and security of our Village community.

Members of the SVERT consists of Accommodation staff, Wardens, RAs, and selected residents who are equipped with the knowledge and training to manage unforeseen incidences and emergency cases.

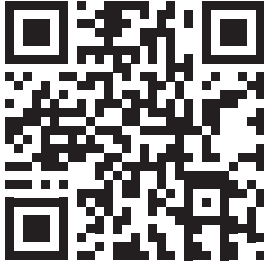
---

Students who have questions or concerns about Student Village are welcome to contact the Accommodation office at [accommodation@swinburne.edu.my](mailto:accommodation@swinburne.edu.my) or visit the Accommodation Office at ground floor, SV1.



# How to apply

1. **Complete the online Student Village Booking Form**
2. **Pay the 1-month rental deposit** and upload the payment transaction on to the Booking Form before you submit the form via email
3. **A Student Village Room Confirmation (SVRC)** email will be sent to you once the form and payment of deposit is received
4. **Prepare for your arrival** to Swinburne Sarawak
5. **Arrive in Swinburne** and check the condition of the room and amenities
6. **Complete the Check-in and Declaration form** and collect your room key card!



Complete the SV Booking Form here

## Need help?

Email us at [accommodation@swinburne.edu.my](mailto:accommodation@swinburne.edu.my) for more information.

## Room Rental Fee

A full semester room rental is to be paid by the first day of class commencement. This also applies to students who arrive after the commencement of the semester. A late penalty is chargeable if payment of room rental is not received after the first day of moving in.

# Other Accommodation Options

## Private room rentals

You could opt to rent your own private room out of campus. These rooms can be either furnished or unfurnished. You are advised to view the room to see its suitability before signing the lease.

## Homestay

Choosing a homestay as your accommodation allows you to stay with a host and experience local Kuching life. Homestay options usually provide a fully-furnished room. The cost will vary as it depends on your arrangement with the host family.

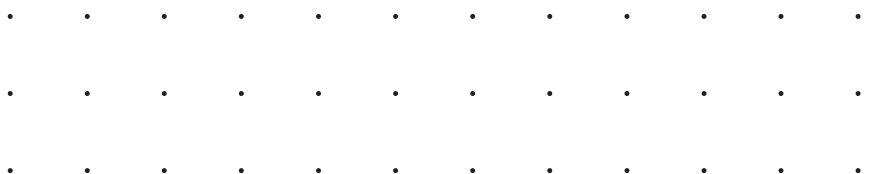
## Temporary accommodation

If you'd prefer to find accommodation after you arrive in Kuching, temporary accommodation is a good option. There are many temporary accommodations located around the campus including hostels and apartments.

## Shared apartment and house

Sharing a rental house or apartment with other individuals may be a cheaper option. This living option gives you ample opportunity to make new friends and have a taste of independent living.

Contact [accommodation@swinburne.edu.my](mailto:accommodation@swinburne.edu.my) for more information.



## Campus

Swinburne University of Technology  
Sarawak Campus  
Jalan Simpang Tiga  
93350 Kuching,  
Sarawak, Malaysia

## Further information

+60 82 415 353  
study@swinburne.edu.my  
swinburne.edu.my

 [facebook.com/swinburnesarawak](https://facebook.com/swinburnesarawak)

 [instagram.com/swinburnesarawak](https://instagram.com/swinburnesarawak)

## DOWNLOADABLE RESOURCES



CRICOS Provider Code (Swinburne University of Technology): 00111D  
DULN004(Q) MQA/SA/0007 Co. No. 199901022294

The information contained in this course guide was correct at the time of publication, June 2024.  
The university reserves the right to alter or amend the material contained in this guide.

For the most up-to-date course information please visit our website.

